

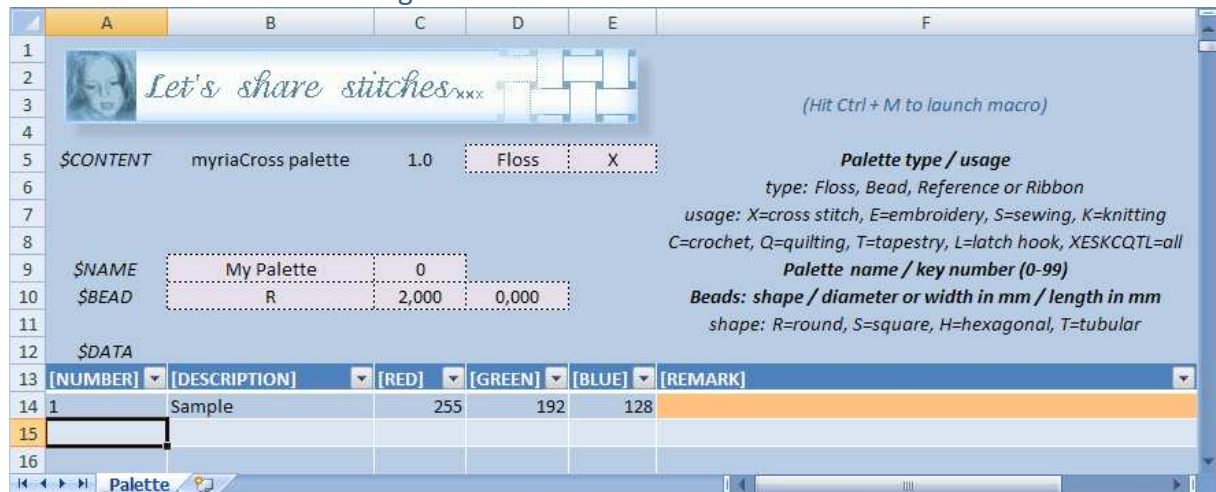
myriaCross editor – lesson 18 : Defining and using custom thread and bead colour ranges

myriaCross editor ships with more than 400 thread and bead colour ranges from most known manufacturers. You may need define your own colours and use them in your patterns. Here is how to do so.

Defining a custom colour range :

Click on menu option *Tools/Colour range creation tool (Excel®)* to load a predefined worksheet in *Microsoft Excel®*. This worksheet will allow you to define a custom colour range containing up to 500 colours. It contains a macro that checks and corrects your input. The *Excel* protection scheme may lock this macro ; see *Appendix B* to learn how to unlock it.

You should now see something like this :



You can now start defining your own colour range ; here is how to do so :

1 Enter the range type **2**
2 Enter the intended usage **3**
3 Enter a name for the range **4**
4 Enter an identifier **5**
5 Enter the bead shape code **6**
6 Enter the bead size **7**
7 Enter the bead length **8**
8 Enter a colour number **9**
9 Enter a colour description **10**
10 Enter the amount of red **11**
11 Enter the amount of green **12**

Enter the amount of blue **13** Enter a remark if you wish (not used in *myriaCross editor*).

Remarks :

- 1** You can create floss or bead ranges but not yet fabric ranges, this will later be implemented.
- 2** The intended usage is used when converting patterns to other content types and when choosing which ranges to show in the available colours panel ; you can combine codes for multiple usages.
- 3** The range name appears in the available colours panel and in pattern palettes.

myriaCross editor – lesson 18 : Defining and using custom thread and bead colour ranges

4 The identifier is a number between 0 and 99 ; you can create up to 100 ranges ; their identifying key is U00 to U99.

5 6 7 If you create a bead range, specify shape and diameter (and length for tubular beads) ; sizes are in millimeters with a pitch of 1/8 mm.

8 Colour number format is free ; rows with empty names will be ignored.

9 Colour description is not mandatory.

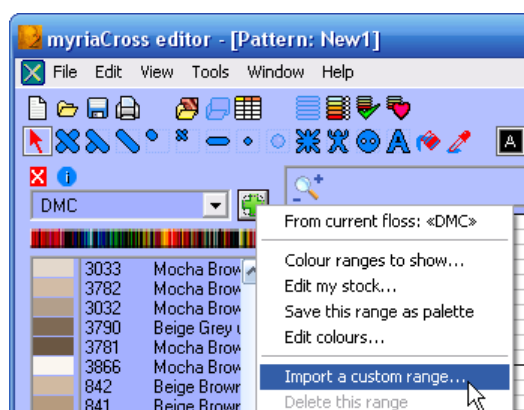
10 11 12 The amounts of red, green and blue are numbers between 0 and 255 ; empty cells will be recognized as 0.

13 Remark is optional ; for convenience, the macro changes its background colour according to the amounts of red, green and blue.

Saving your colour range :

Save your work to a standard *Excel* file (xls, xslm or xlsb) ; you can later add or modify colours and update *myriaCross editor* range accordingly.

Using your colour range in *myriaCross editor* :

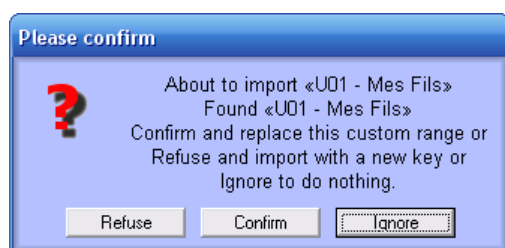


Save your work to a semicolon delimited *Excel* file (csv). Launch *myriaCross editor* and open the available colours panel.

Click on menu option *Import a custom range*.

Select a semicolon delimited csv file in the file open dialog. *myriaCross editor* will load this file, convert it to a colour range and make it available in the panel.

In the event a custom range having the same identification number already exists, you will get this message :



Press *Ignore* if you forgot changing the identifier cell in the worksheet and want to correct it. Press *Refuse* if you want to use next free identifier ; warning : the worksheet and converted range will have different identifiers. Press *Confirm* if you made no mistake and your intent was to update the existing range.



You should now see your range, such as this sample one, in the available colours panel.

You can use your own range colours the same way as preset range colours except :

- User colours in pattern palette cannot be standardized since they can provide from another user.
- User colours cannot be edited inside *myriaCross editor* ; edit your *Excel* worksheet and import your modified range again.

myriaCross editor – lesson 18 : Defining and using custom thread and bead colour ranges

Appendix A – Files and folders

Predefined *Excel* worksheet can be found in :

- Folder : *My documents\myriaCross editor\Custom*
- English version : *Colour range.xls*
- French version : *Gamme de couleurs.xls*
- Other versions : According to replacement language as set in language file

You can of course open predefined worksheet out of *myriaCross editor*.

You should save your own colour range worksheets in this folder for easy retrieval but it is not mandatory ; do not forget to make backup copies of your worksheets.

Do not open *Excel* worksheets with *Open Office* since the macro will be unusable.

In the event *Excel* is not installed on your computer, you can open the sample csv file in a text editor such as *NotePad* and create your range here.

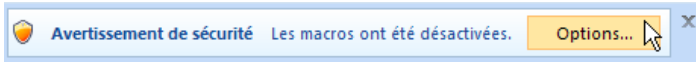
```
|:;;;
$CONTENT;myriaCross palette;1.0;Floss;X;Palette type / usage
;;;type: Floss, Bead, Reference or Ribbon
;;;usage: X=cross stitch, E=embroidery, S=sewing, K=knitting
;;;C=crochet, Q=quilting, T=tapestry, L=latch hook, XESKCQTL=all
$NAME;My Palette;0;;;Palette name / key number (0-99)
$BEAD;R;2;0;;Beads: shape / diameter or width in mm / length in mm
;;;shape: R=round, S=square, H=hexagonal, T=tubular
$DATA;;;
[NUMBER];[DESCRIPTION];[RED];[GREEN];[BLUE];[REMARK]
1;Black;0;0;0;
2;Red;255;0;0;
3;Green;0;255;0;
4;Blue;0;0;255;
5;Cyan;0;255;255;
6;Magenta;255;0;255;
7;Yellow;255;255;0;
8;White;255;255;255;
```

I

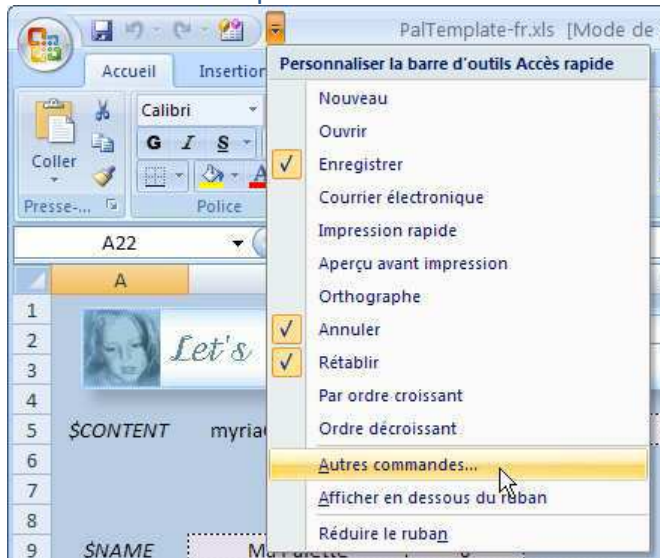
myriaCross editor – lesson 18 : Defining and using custom thread and bead colour ranges

Appendix B - Activating macros in the Excel worksheet :

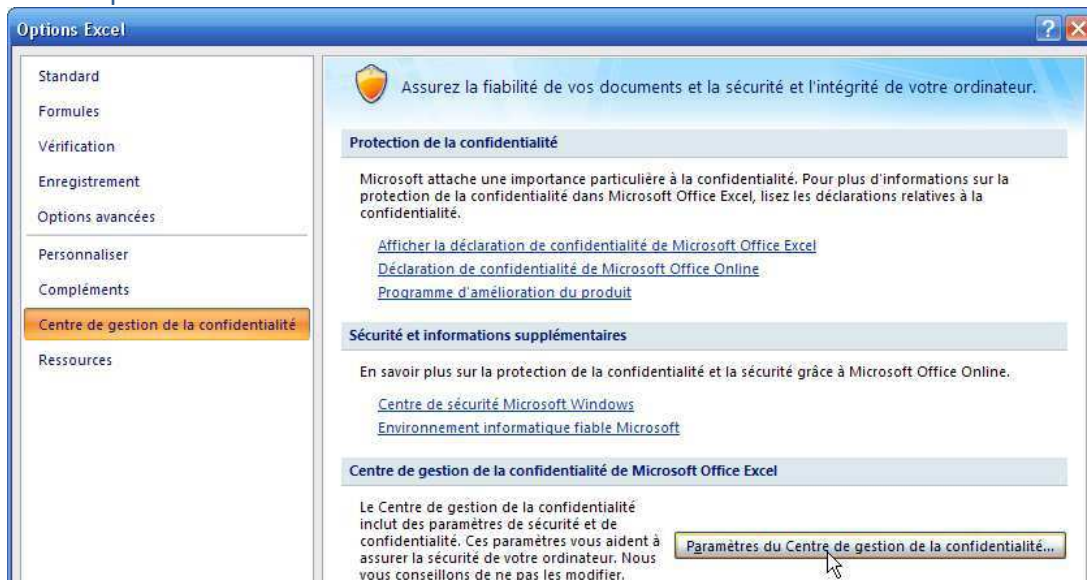
If you get a security warning, click on the button and activate the content :



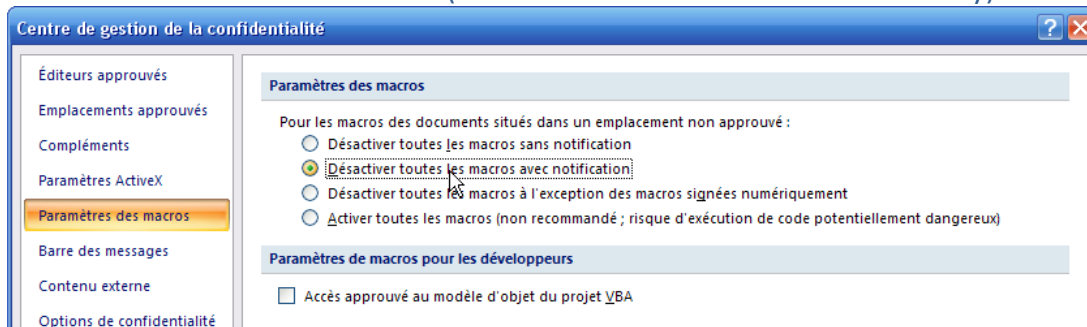
If you get a message about security restrictions or no message at all, click on the *Other commands* menu option.



Select option as shown then click the button :



Deactivate all macros with notice (best choice for convenience and security) :



Then leave *Excel* and try again ; you should now get a security warning and a convenient way to enable macros.