

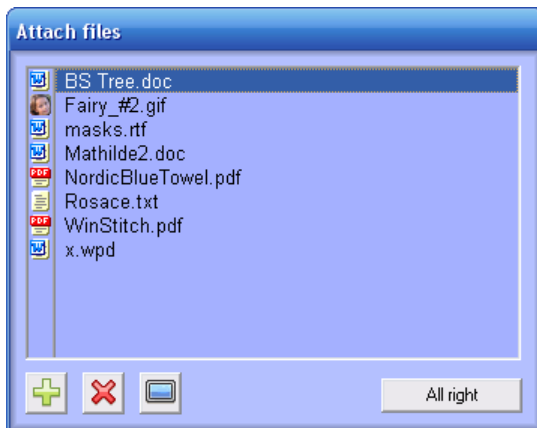
myriaCross editor - Lesson 16 : Attaching files

Why attach files to your pattern file ?

You may want to attach a photo of the embroidered pattern to show what it looks like, the photo you used to create this pattern, or more information.

Whatever the reason, you can attach pictures, documents and patterns to your pattern file that will contain them the same way as zip archives do.

Launching the *Attach files* dialog



Click menu option *File / Attach* or click on icon ⚠ if something is already attached.

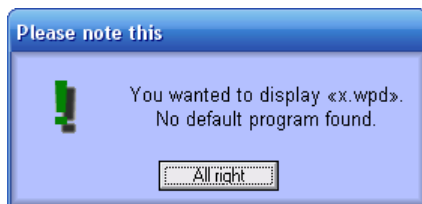
Click on  to add files.

Click on  to remove current file.

Click on  to open current file.

(default program associated with this file type will be used)

Press *All right* when you have finished.



In the event there is no program associated with current file type, this message will display.

You need set a default program to open such files then try again.

Setting default program to open a file type

Nom	Taille	Type	Date de modification
x.sxw	650 Ko	Document texte Op...	12/07/2013 14:57
x.tga	725 Ko	Fichier TGA	12/07/2013 14:58
x.tif	726 Ko	Image TIF	12/07/2013 14:58
x.txt	650 Ko	Document texte	12/07/2013 14:57
x.wpd	650 Ko	Fichier WPD	12/07/2013 14:57
x.wri	650 Ko	Document Write	12/07/2013 14:57

In *Windows Explorer*, select file then right-click on it to display context menu.

Select menu option *Open with...* or *Open with / Choose program...*; if a dialog appears asking you either to *Use Web*

service to find the program or *Select the program in a list*, choose second option then choose a program in the list.

Do not forget to check option *Always use this program to open this file type* to make the program the default one.

Possible default programs per file type

Windows bitmap (bmp, ico)

MS Paint, IrfanView, OpenOffice

Graphics Interchange Format (gif)

MS Paint, IrfanView, OpenOffice

Independent JPEG Group (jpg)

MS Paint, IrfanView, OpenOffice

Portable bitmap (pbm)

IrfanView, OpenOffice

Portable greymap (pgm)

IrfanView, OpenOffice

Portable pixmap (ppm)

IrfanView, OpenOffice

myriaCross editor - Lesson 16 : Attaching files

Kodak PhotoCD (pcd)	<i>IrfanView, OpenOffice</i>
Zsoft Paintbrush (pcx)	<i>Paintbrush, MS Paint, IrfanView, OpenOffice</i>
Portable Network Graphics (png)	<i>MS Paint, IrfanView, OpenOffice</i>
Adobe Photoshop (psd)	<i>IrfanView, OpenOffice</i>
Truevision Targa files (tga)	<i>IrfanView, OpenOffice</i>
Tagged Image File Format (tif)	<i>MS Paint, IrfanView, OpenOffice</i>
MS Word (doc)	<i>MS Word</i>
Open Office (odt)	<i>OpenOffice</i>
Adobe (pdf)	<i>Adobe Reader, Foxit Reader</i>
Rich Text (rtf)	<i>MS Word, MS WordPad, OpenOffice</i>
Open Office (sxw)	<i>OpenOffice</i>
Text (txt)	<i>MS NotePad, AkelPad, OpenOffice</i>
WordPerfect (wpd)	<i>WordPerfect, MS Word, OpenOffice</i>
WordPad (wri)	<i>MS Word, MS WordPad</i>

IrfanView is a free image viewer

<http://www.irfanview.com/>



AkelPad is a free text editor

<http://akelpad.sf.net/>

OpenOffice

<http://www.openoffice.org/>

Remarks

1. Obviously, attaching files **increases** the pattern **file size** but not a too big amount since attached files are **compressed together** with their container.
2. When a pattern is read-only, you cannot add or remove attached files but you can open them.
3. Latest versions allow attaching *myriaCross native* **.mcpat files**, offering the ability to include user-defined **specialty stitches, motifs** and **stitched fonts** that could be used to customize the pattern. Only myriaCross editor patterns can be attached. When you click on the open  icon, selected pattern is requested for load and icon  blinks in the main window ; it will be actually loaded when you leave the dialog.