

myriaCross editor - Lesson 8 : Managing the stock

What is the stock ?

The stock is the threads and beads you own. You can add thread and bead references to the stock, define quantities, add remarks, delete references from the stock, export the stock to *microsoft Excel* and convert pattern palettes to use what you have in stock.

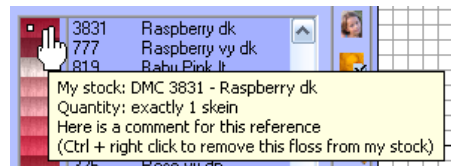
Adding or deleting references

957	Geranium pl
956	Geranium
309	Rose dp
963	Dusty Rose ul vy lt
3716	Dusty Rose vy lt
962	Dusty Rose md
961	Dusty Rose dk
3833	Raspberry lt
3832	Raspberry md
3831	Raspberry dk
777	Raspberry vy dk
819	Baby Pink lt
3326	Rose lt
776	Pink md
899	Rose md
335	Rose
326	Rose vy dp
151	Dusty Rose vy lt
3354	Dusty Rose lt
3733	Dusty Rose
3731	Dusty Rose vy dk
3350	Dusty Rose ul dk
150	Dusty Rose ul vy dk
3689	Mauve lt
3688	Mauve md
3687	Mauve
3803	Mauve md
3685	Mauve dk
605	Cranberry vy lt

In order to ensure the data validity, you can only add references to the stock from the **available colours** panel.

Colour previews marked with a small white square show references that already exist in the stock.

Hovering over such a colour preview shows a summary of the stock information :

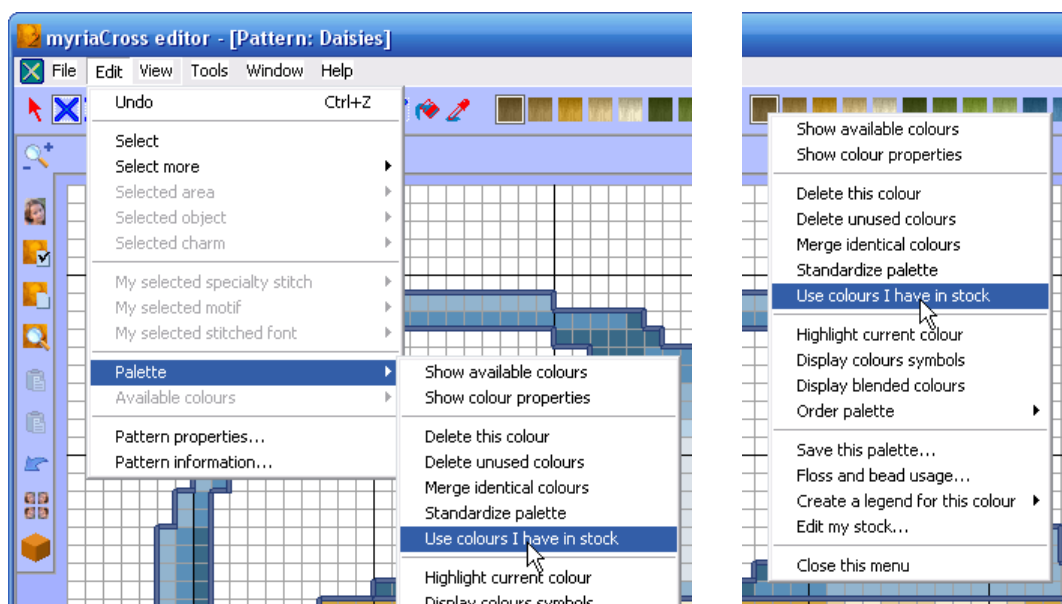


To **add a reference**, Ctrl+left click on the colour preview or right click on the colour reference then select the option in the menu. Added references have quantity *unknown*.

To **delete a reference**, Ctrl+right click on the colour preview or right click on the colour reference then select the option in the menu.


Converting the pattern palette to use what is in stock

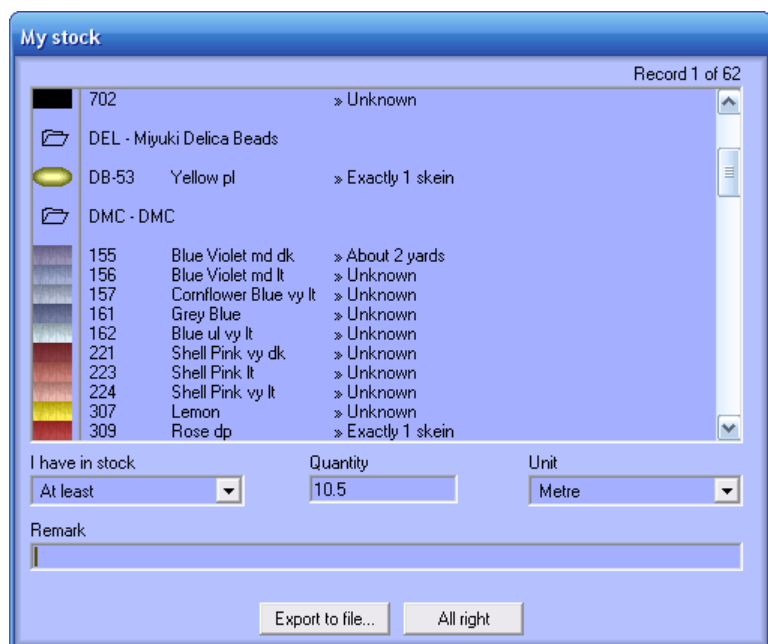
Call this function from main menu or right click on the colour palette of the pattern.



myriaCross editor - Lesson 8 : Managing the stock

Editing the stock

Call this function from main menu, or right click on the colour palette of the pattern, or click on  in the available colours panel.



Above list shows the stock content. Selecting a reference allows editing it with the fields below.

The field **I have in stock** allows qualifying the quantity. Added references start with value *Unknown (quantity)*. If you select *Nothing*, the reference will be deleted.

The field **Quantity** allows you to enter it. If you enter quantity 0 (zero), the reference will be deleted. The field **Unit** allows you to specify it when it is necessary.

The field **Remark** lets you enter any

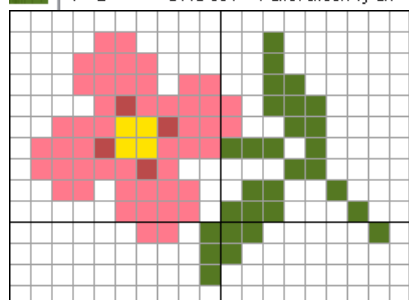
comment you wish.

To export the stock to *microsoft Excel*, click on button **Export to file**, choose file type **CSV** and enter a filename.

Finally, click on button **All right**. References to be deleted will be and the stock will be saved.

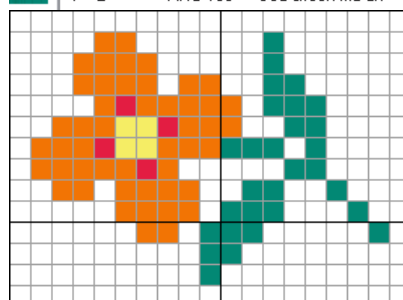
Sample pattern converted to stock colours

Nr	Strands	Colour	Description
1	2	DMC 892	Carnation md
2	2	DMC 309	Rose dp
3	2	DMC 973	Canary br
4	2	DMC 904	Parrot Green vy dk



Original pattern

Nr	Strands	Colour	Description
1	2	ANC 316	Tangerine dk
2	2	DMC 666	Christmas Red br
3	2	ANC 288	Canary Yellow lt
4	2	ANC 188	Sea Green md dk



Converted pattern

ANC - Anchor	
1	Snow White
131	Blue md
188	Sea Green md dk
288	Canary Yellow lt
316	Tangerine dk
DMC - DMC	
310	Black
666	Christmas Red br

Stock colours