

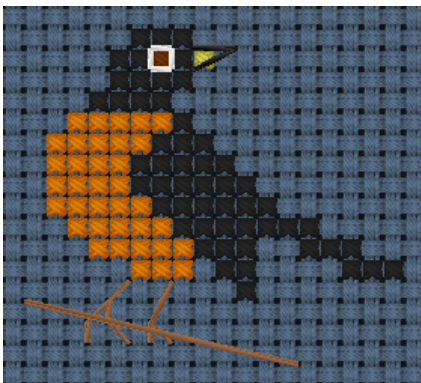
myriaCross editor - Lesson 5 : Colour variation

What is colour variation ?



Most of the cross stitch patterns use a few colours. **Ellen Maurer-Stroh** gets nice effects using colour shades: this is colour variation. You can obviously vary colours by using different ones but also by blending them: using 2 different colours on your needle may give excellent results.

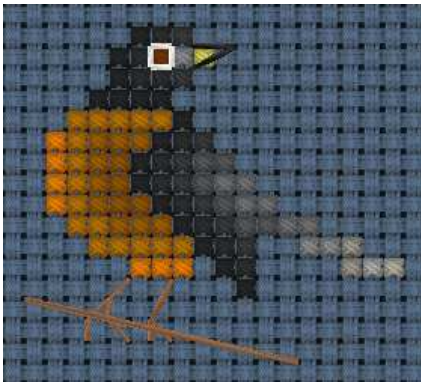
Sample pattern with no colour variation



Nr	Strands	Colour
1	2	DMC 310
2	2	DMC Blanc
3	2	DMC 741
4	2	DMC 433
5	2	DMC 445

This pattern uses 5 colours ; though it is a nice pattern, the result seems flat. Using colour variation may give a 3D effect.

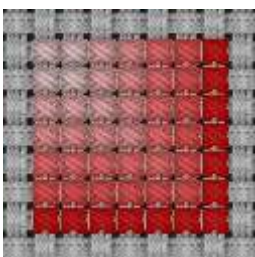
The same pattern with colour variation



Nr	Strands	Colour	Description
1	2	DMC 310	Black
2	2	DMC Blanc	White
3	2	DMC 741	Tangerine md
4	2	DMC 433	Brown md
5	2	DMC 445	Lemon lt
6	2	DMC 783	Topaz md
7	2	DMC 782	Topaz dk
8	2	DMC 781	Topaz vy dk
9	2	DMC 5287	Silver dk
10	2	DMC 844	Beaver Grey ul dk
11	2	DMC 317	Pewter Grey
12	2	DMC 414	Steel Grey dk
13	2	DMC 318	Steel Grey lt
14	2	DMC E168	Silver
15	2	DMC 168	Pewter vy lt
16	2	DMC 644	Beige Grey md

The pattern now uses 16 colours. This means far more colours than the original pattern but the effect is interesting.

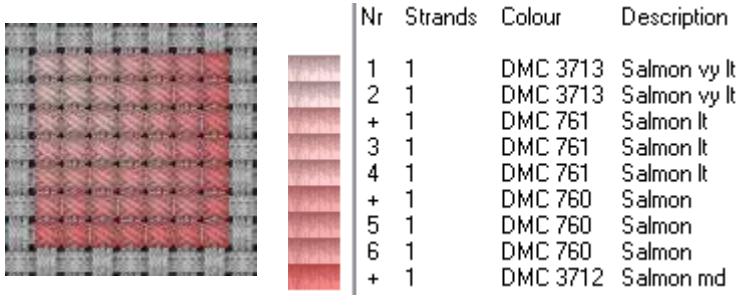
Colour variation by colours blending



Nr	Strands	Colour	Description
1	2	DMC 3713	Salmon vy lt
2	2	DMC 761	Salmon lt
3	2	DMC 760	Salmon
4	2	DMC 3712	Salmon md
5	2	DMC 3328	Salmon dk
6	2	DMC 347	Salmon vy dk

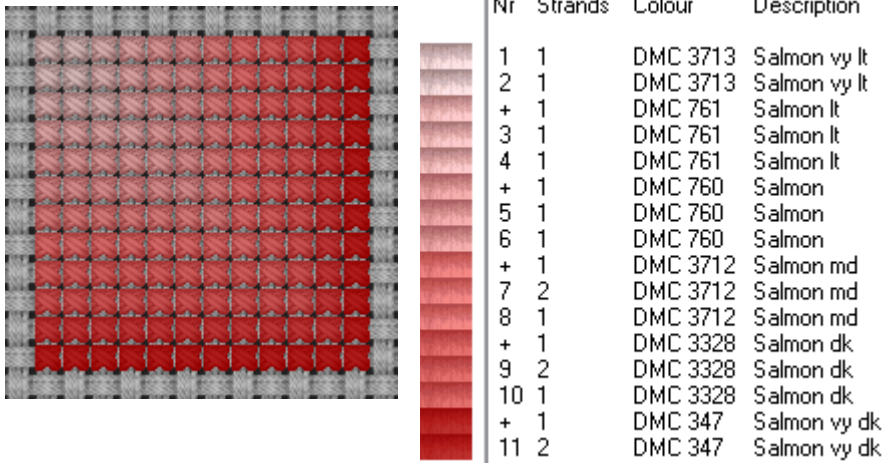
This pattern uses all 6 colours in DMC colour family Salmon.

myriaCross editor - Lesson 5 : Colour variation

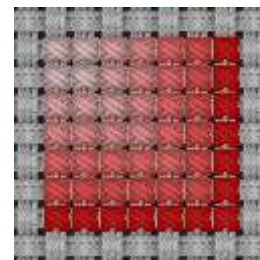


This pattern uses only 4 colours in DMC colour family Salmon.

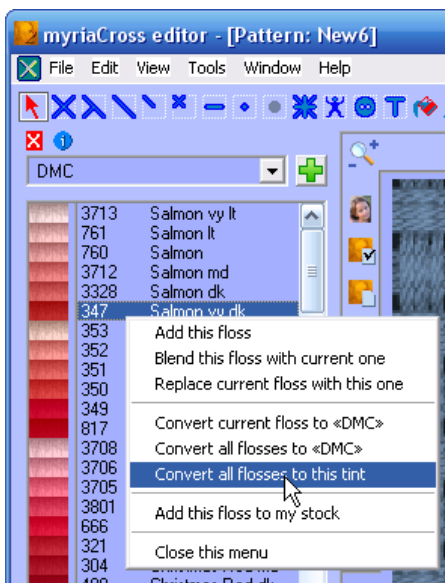
The contrast is not the same but the shape is smoother.



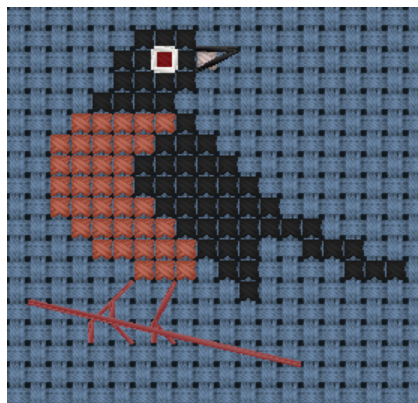
This pattern uses all 6 colours in DMC colour family Salmon again. The colour variation in this pattern is smoother than in the original pattern.



Converting whole pattern to a tint



Your pattern can use a single colour variation by converting all its colours to a colour shade. Let's take your sample pattern again. We will now convert it to a red pattern :



Nr	Strands	Colour	Description
1	2	DMC 310	Black
2	2	DMC 3778	Terra Cotta lt
3	2	DMC E815	Red Ruby dk
4	2	DMC 819	Baby Pink lt
5	2	DMC Blanc	White

This time the pattern uses 5 colours only. Of course, the process did not add details.

Blended colour ranges

The program ships with some preset blended thread ranges. They are named upon the base range name : *DMC+* contains blends of *DMC* colours. Currently available blended ranges are : **Anchor**, **DMC**, **Hand Dyed Fibers**, **Lavander & Lace Needlepoints**, **Rosace** and **Vineyard Silk**.