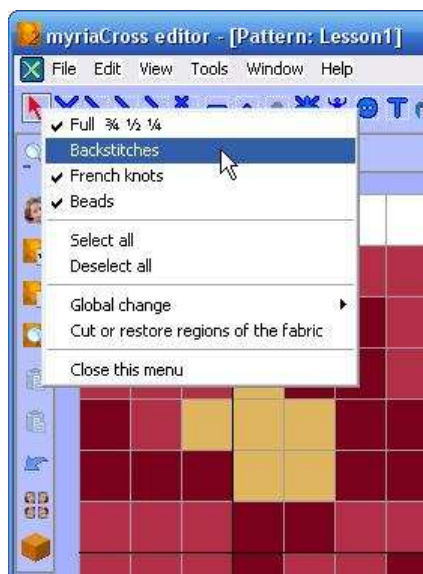
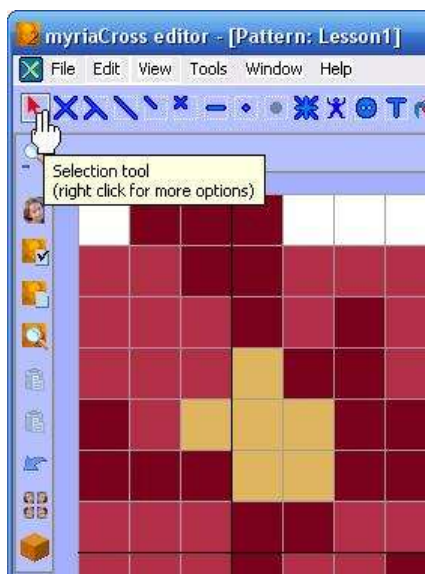


# myriaCross editor - Lesson 1 : Making a selection

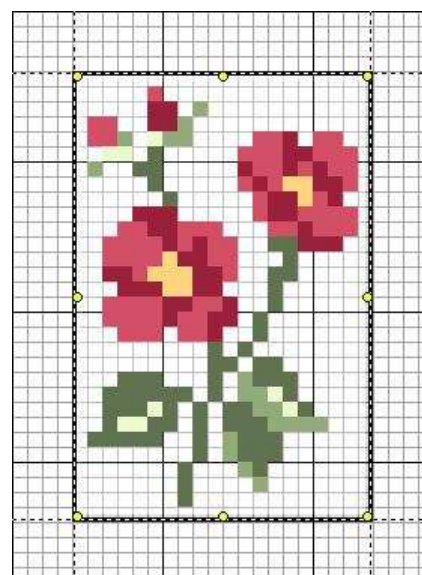
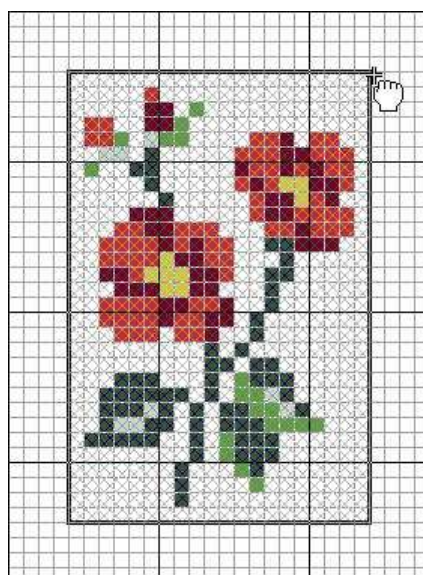
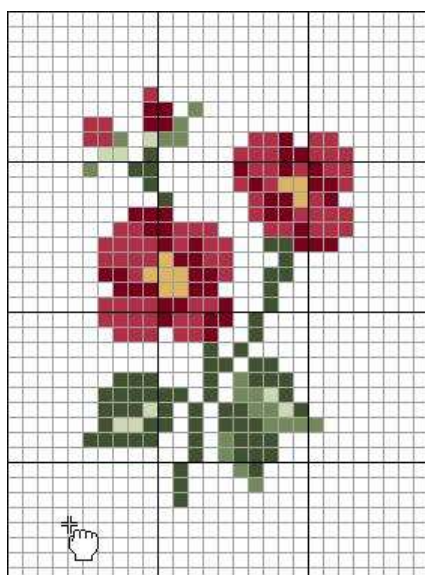
## Activating the selection mode

Click on selection tool icon to activate the selection mode. You could right click on the icon to choose what to exclude from the selection. You could also automatically select all (but objects) in the pattern.



## Making a rectangular area selection

Define first corner of the selection rectangle by clicking on a grid square. While holding down the button, move to next corner of the rectangle then release the button.



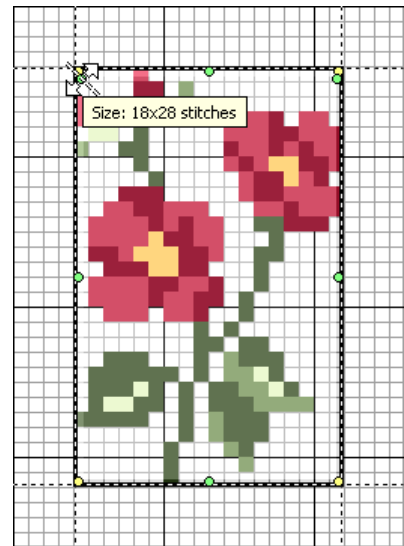
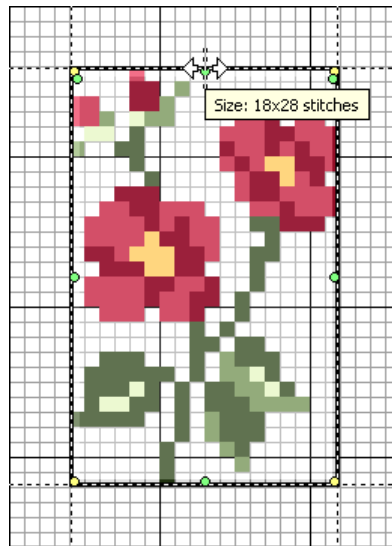
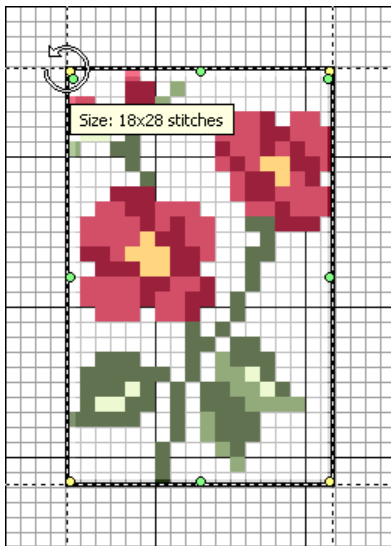
## Moving the selection

Click inside the selection rectangle. While holding down the button, move to new position of the rectangle then release the button. You can move faster (no redraw) by holding **Ctrl+Shift** keys pressed.

# myriaCross editor - Lesson 1 : Making a selection

## Quickly rotating or mirroring the selection

Move the mouse to the yellow dots until the mouse shape changes to a rotation arrow then click. Move the mouse to the green dots until the mouse shape changes to a double arrow then click.

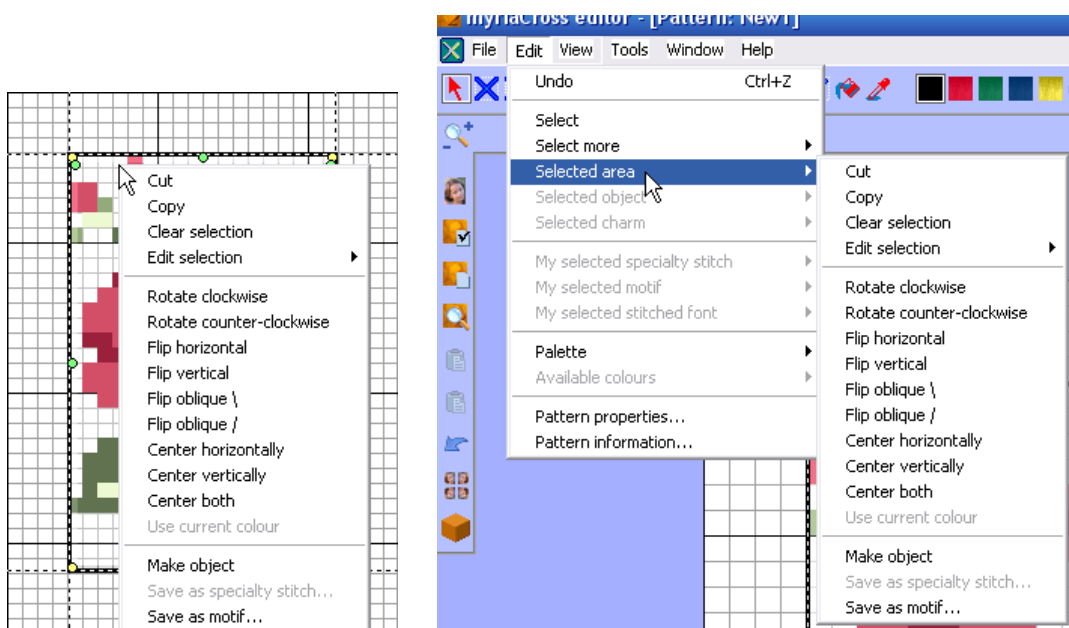


## Changing the colour in the selection

If there is only one colour in selected area, you can replace it with current colour from the edition menu.

## Doing something else with the selection

Right click inside the selection rectangle then choose an option in the menu. You can also make this menu appear from main menu.



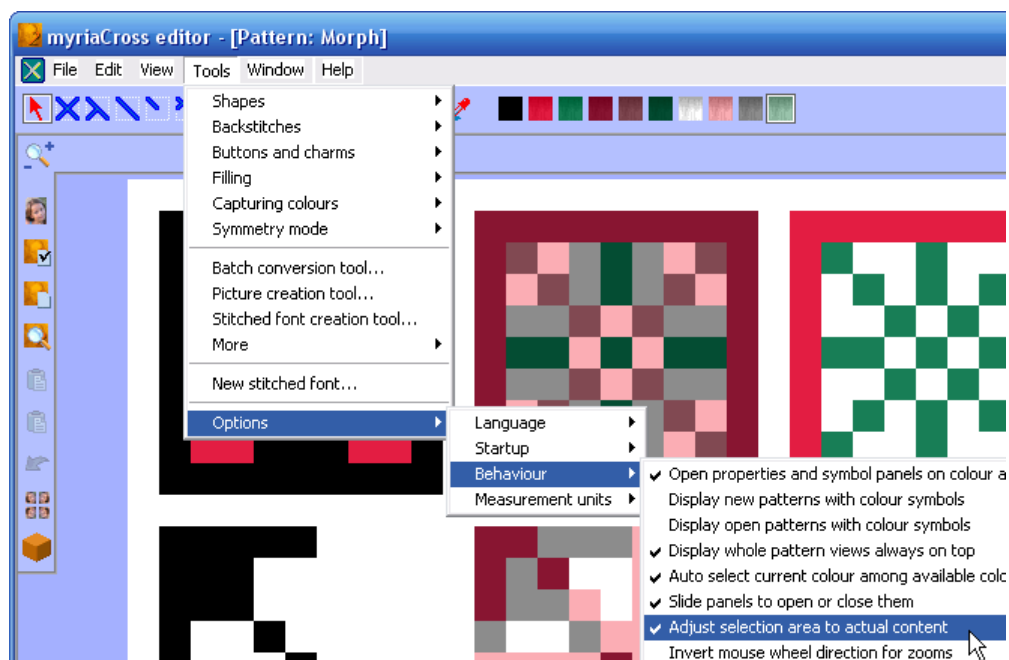
# myriaCross editor - Lesson 1 : Making a selection

## Leaving the selection

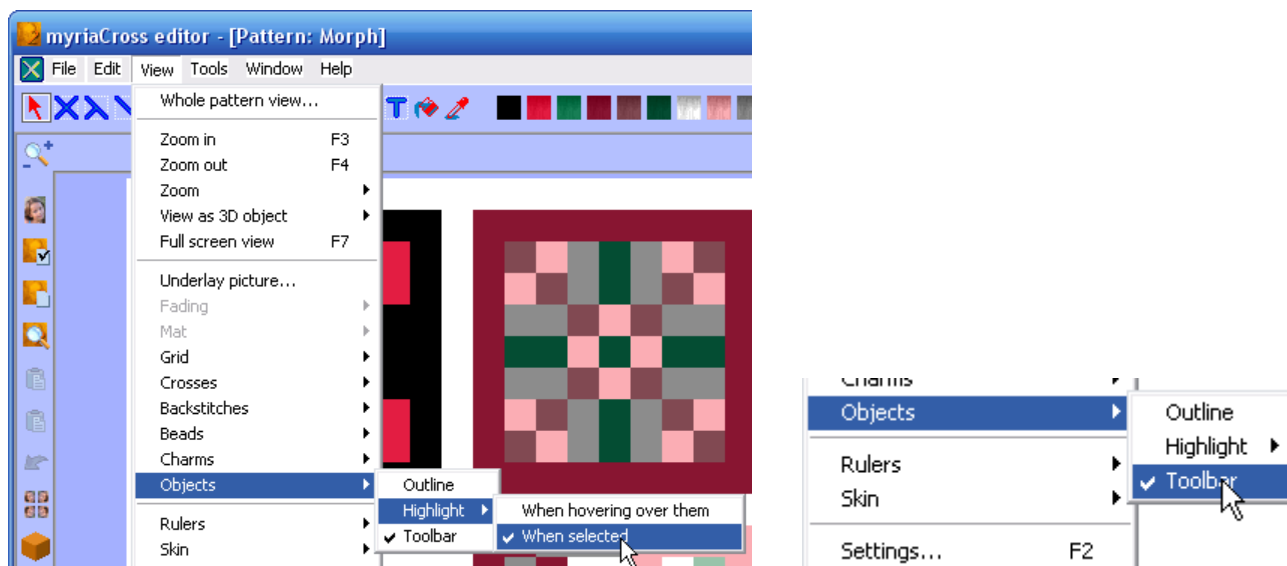
Either click outside the selection rectangle, make another selection or hit **ESC** key.

## More about selections

Selection rectangle may be automatically **adjusted** to actual content.

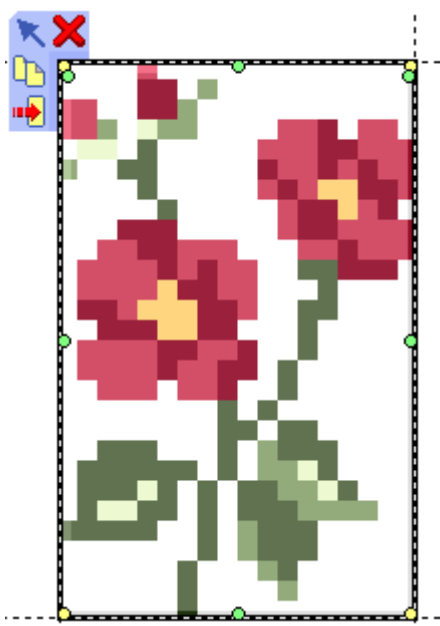


Selection content may be **highlighted** and there can be a sticky **toolbar** at top left corner of the selection rectangle.



# myriaCross editor - Lesson 1 : Making a selection

## Using the selection toolbar



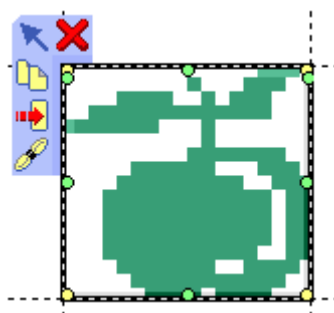
This toolbar contains a subset of the actions you can find in the menu. It allows quick edition of the selection :

Click on  to leave the selection.

Click on  to delete selected area.

Click on  to copy the selection.

Click on  to make an object with selected area.



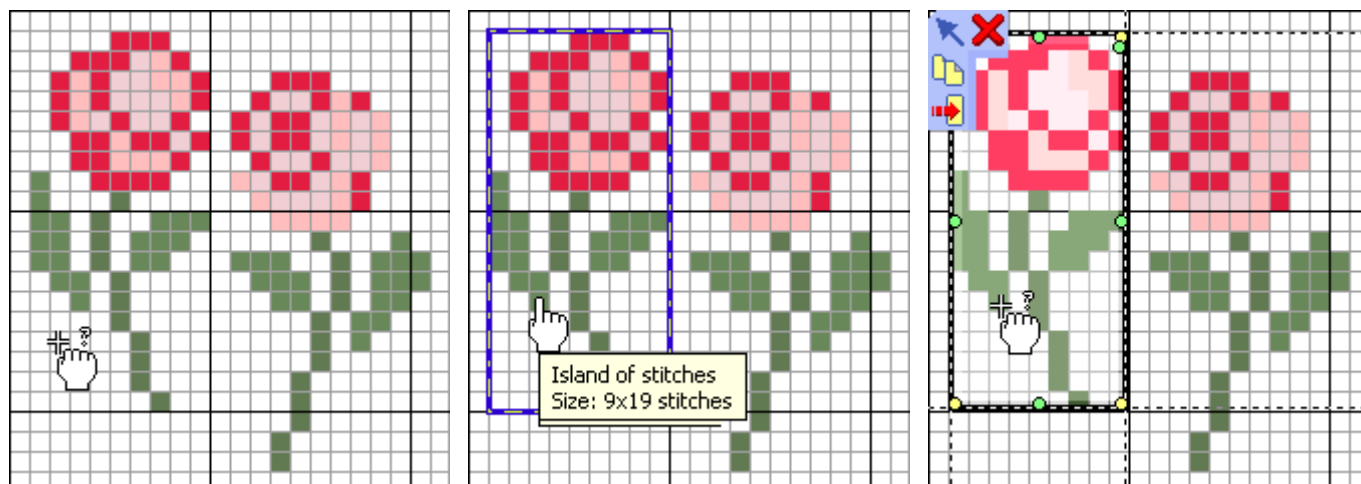
For a single colour selection :

Click on  to let selected stitches use current palette colour.

## Automatically detecting an island of stitches

Press **Shift** key then move over a cross. All neighbouring crosses will be detected, backstitches having both endpoints touching or inside crosses will be included. French knots and beads touching or inside crosses will be included too.

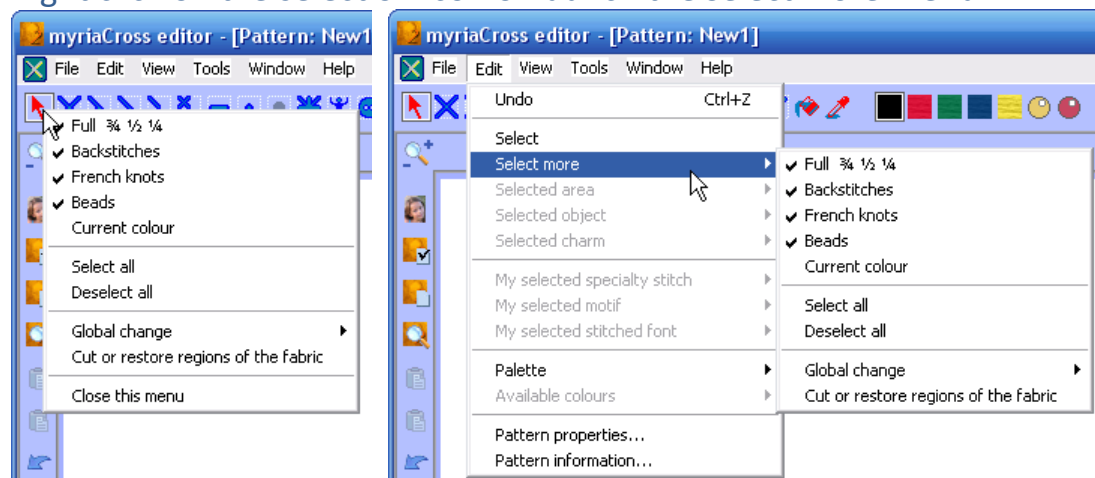
While holding **Shift** key pressed, click inside the island bounding box to select it.



# myriaCross editor - Lesson 1 : Making a selection

## Making a fine selection

Right click on the selection icon or launch the *Select more* menu.



Uncheck either *Full*, *Backstitches*, *French knots* or *Beads* to exclude them from further selections. Check *Current colour* to include only items using current colour in further selections.

Click *Select all* to make a selection with all items (but objects) meeting the selection criteria or make a rectangular selection or use island detection.